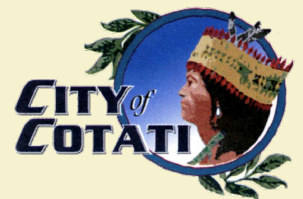




# VISION: COTATI

Circulation  
May 9, 2011

DE NOVO PLANNING GROUP



# Workshop Overview



- General Plan Overview and State Requirements
- Summary of the General Plan Update Process
- Transportation and Circulation Overview
- Activity 1: Post-its- Circulation Priorities
- Activity 2: Circulation Mapping
- Summary of What We Have Heard

# General Plan Overview



- The General Plan Update will reflect community goals and serve as the City's “constitution” or “blueprint” for future land use and planning decisions, including:
  - Land Uses (residential, commercial, industrial, agricultural, open space, etc.)
  - Infrastructure Planning (roads, water, sewer, etc.)
  - Public Services (police, fire, parks, libraries, cultural activities, etc.)
  - Resource Conservation (ag lands, sensitive habitat, waterways, groundwater, etc.)

# General Plan Overview



- Future decisions must be consistent with the General Plan:
  - Specific Plans
  - Subdivisions
  - Public Works Projects
  - Zoning Decisions

# Purpose of the General Plan



- Define a long-term vision for future growth within the City and Planning Area over the next 20 years
- Reflect the goals and values of the City
- Build on recent City planning efforts
- Include extensive public outreach and community participation
- Balance growth, conservation, and quality of life

# Summary of the Process



Public Participation

Visioning Workshops



Existing Conditions Report



Issues and Opportunities Report



General Plan Goals, Policies and Programs



Draft General Plan Update



Environmental Impact Report



Public Hearings - General Plan and EIR



# Step 1: Visioning Process



- The Visioning Workshops focus on:
  - Communicating the intent of the General Plan update
  - Gathering public input
- Their primary purpose is to:
  - Develop a Vision Statement that guides the General Plan process
  - Identify community values and priorities
  - Identify issues for the General Plan to address

# Step 2: Existing Conditions



- The Existing Conditions Report will document the following:
  - Development Patterns
  - Natural Resources
  - Community Health and Wellness
  - Socioeconomic Conditions
  - Environmental Constraints
  - Recent Planning and Policy Efforts



# Step 2: Existing Conditions



- The Existing Conditions Report will describe recent planning efforts :
  - Downtown Specific Plan
  - Sustainable Building Program
  - Bicycle and Pedestrian Master Plan
  - Draft Citywide Traffic Improvement Plan
  - Formula-based Fast Food Restaurant Restrictions
  - Limitations on large and warehouse retail uses
  - Healthy Eating Active Living Community

# Step 3: Issues and Opportunities



- The Issues and Opportunities Report will:
  - Summarize the visioning process
  - Identify community values and priorities
  - Describe areas of focus for goal and policy development
  - Identify key concerns and potential solutions
  - Serve as a “road map” for the preparation of the General Plan

# Step 4: Housing Element Update



- State law identifies specific schedule for Housing Element updates
- Address 2007-2014 Regional Housing Needs Allocation
- Sets forth strategy for addressing housing needs (new construction, rehabilitation, special-needs housing) for all income levels
- Housing Element requires State review and certification

# Step 5: Goals, Policies and Programs

## GENERAL PLAN ELEMENTS

### Required Elements

- Land Use
- Circulation
- Housing
- Conservation
- Open Space
- Safety
- Noise

### Optional Elements

- Community Health and Wellness
- Economic Vitality
- Community Facilities and Services



# Step 5: Goals, Policies and Programs



## Goals

Broad statements of community desires, preferences, and the General Plan's purpose

## Policies

Guides to decision-makers with respect to development proposals, future growth and resource allocation

## Programs

Implementation steps to ensure goals and policies are carried out



# Step 6: Draft General Plan



- The General Plan Update will include comprehensive goals, policies and programs for each element based on:
  - Results of Visioning process
  - Direction from City Council
  - Direction from Planning Commission
  - Public input



# Step 6: General Plan Update



- Each General Plan Element will:
  - Address requirements of state law
  - Seek to avoid or mitigate environmental impacts
  - Be grounded in sound community planning techniques
  - Reflect the goals and priorities of the community
  - Ensure internal consistency with other elements

# Step 7: Environmental Review



- The California Environmental Quality Act (CEQA) requires the preparation of an EIR prior to adoption of the General Plan.
- The EIR will be prepared concurrently with the General Plan.
- The EIR will identify possible environmental impacts
  - Measures will be incorporated into the General Plan to make it a “self-mitigating” document.

# Step 8: Adoption of the General Plan



- Once the General Plan and EIR have been prepared, they will be brought to the City Council for consideration and adoption.

# Community Participation and Outreach



## PARTICIPATION

- Kick-off Meeting
- Visioning Workshops (4)
- Planning Commission: Goal and Policy Development (11)
- Planning Commission Hearings (2)
- City Council (8)

## OUTREACH

- General Plan Website
- Community Presentations
- Newsletters
- Stakeholder Interviews

# Six-Month Timeline

Task	Tentative Completion Date
<b>Step 1 – Visioning Process</b>	
Visioning Workshops	#1: March 21, 2011 #2: April 6, 2011 #3: April 25, 2011 #4: May 9, 2011
<b>Step 2 – Existing Conditions</b>	
Existing Conditions Report	July 2011
<b>Step 3 – Issues and Opportunities Report</b>	
Issues and Opportunities Report	July/August 2011
<b>Step 4 - Goals, Policies and Programs</b>	
First Planning Commission Goal and Policy Development Workshop	July 2011

# Get Involved



If you would like to be notified by e-mail of upcoming General Plan events, please contact:

Keri Pajon, Cotati Planning Department at  
(707) 665-3637 or [kpajon@ci.cotati.ca.us](mailto:kpajon@ci.cotati.ca.us)

Please visit the General Plan website to take a survey, enter in the Photo Contest, and find upcoming meeting dates:

[cotati.generalplan.org](http://cotati.generalplan.org)





# TRANSPORTATION IN COTATI

## CIRCULATION FOUNDATIONS AND EXISTING CONDITIONS

# Circulation in Cotati



## Diverse types of users

- Residents, visitors, employees
- Children, Elderly, Disabled
- Movers of goods
- Those passing through

# Circulation in Cotati



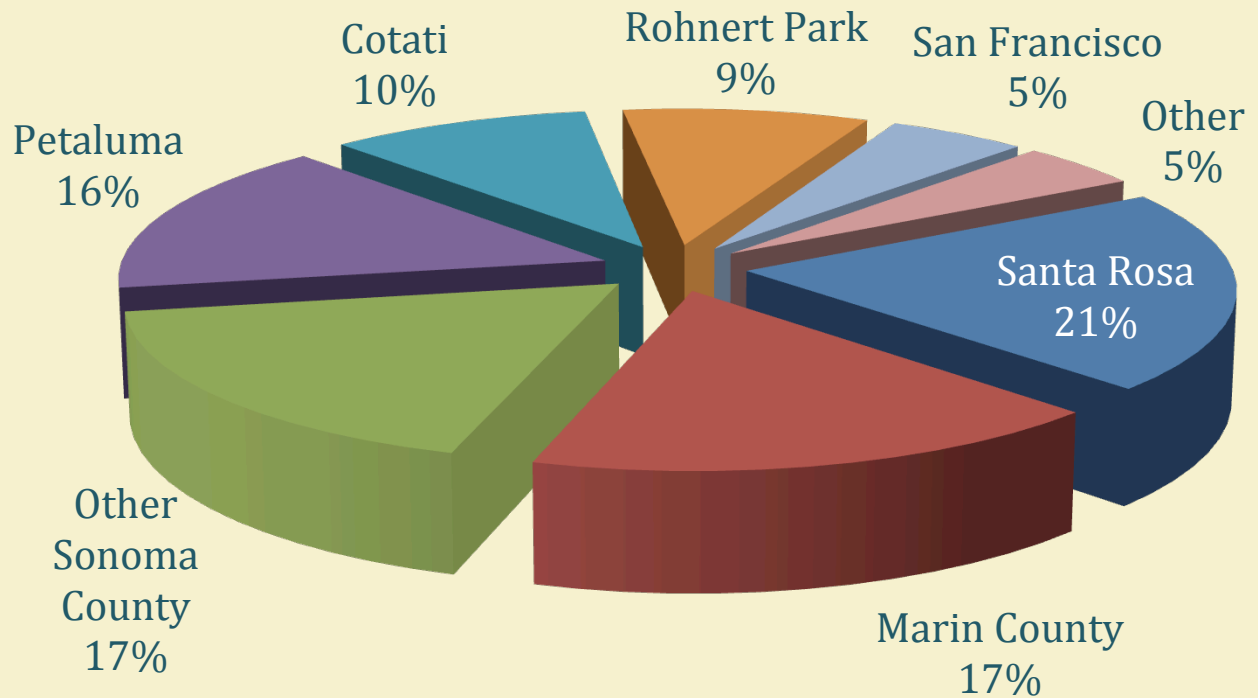
## Travel origins and destinations

- Work
- Schools (including Sonoma State)
- Recreation
- Shops and services
- Freight terminals

# Circulation in Cotati



## Cotati Resident Workplaces

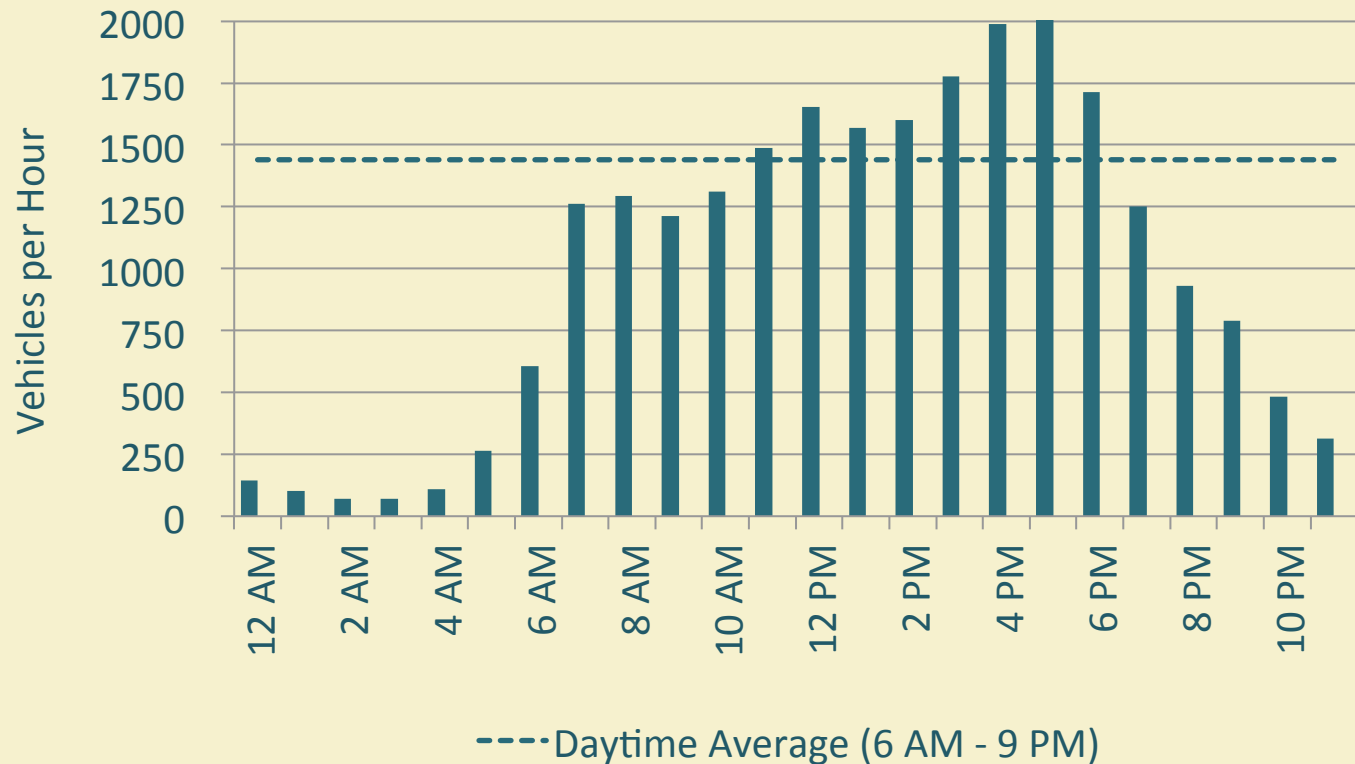


# Circulation in Cotati



## Travel by Time of Day

### Old Redwood Highway (North)

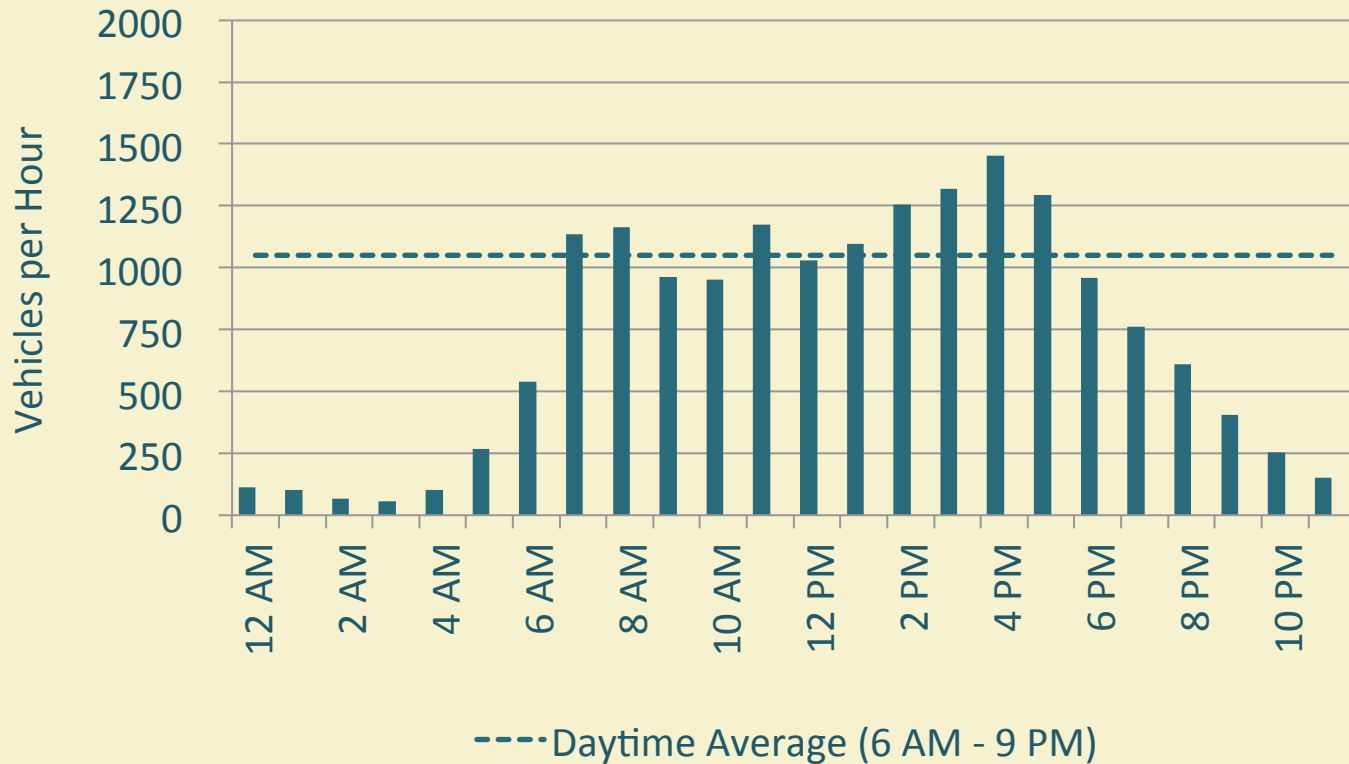


# Circulation in Cotati



## Travel by Time of Day

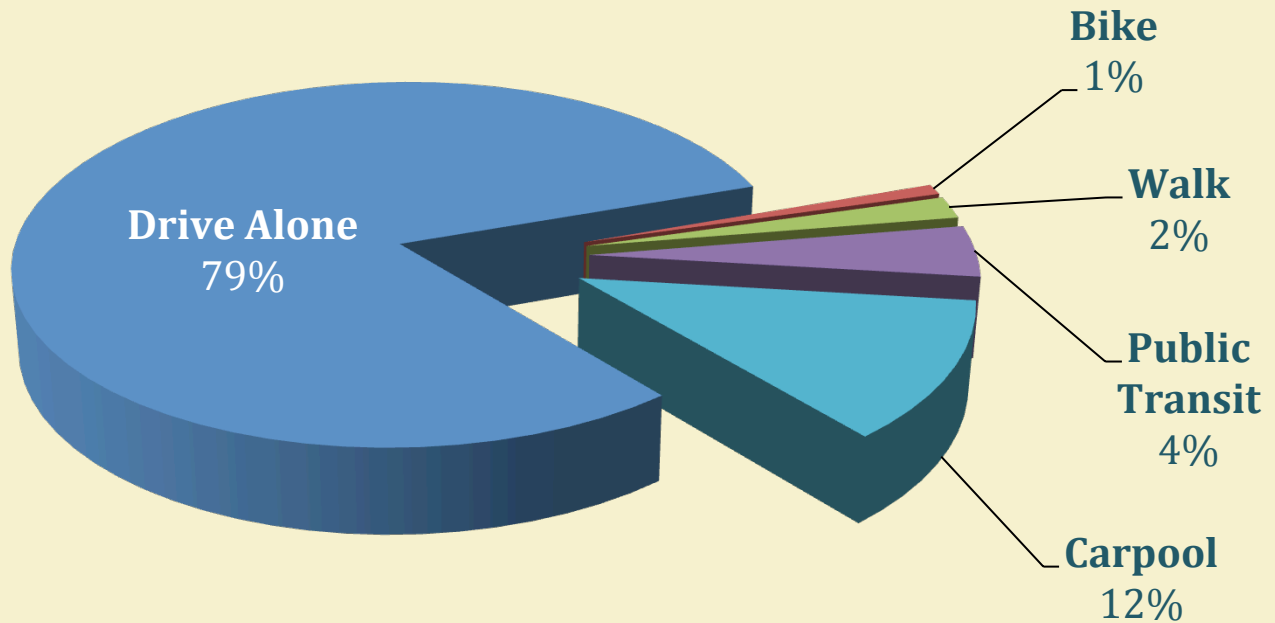
### East Cotati Avenue





# Circulation in Cotati

## Cotati Commuter Travel Modes



# Circulation in Cotati



## Other Travel Characteristics

- **Trip Purpose**

- 23% Home to Work
- 60% Home to Other
- 17% Other to Other

- **Median Travel Time**

- 17 minutes Home to Work
- 12 minutes Home to Other
- 11 minutes Other to Other



# TRANSPORTATION IN COTATI

## PLANNED IMPROVEMENTS

# Circulation in Cotati



## SCTA Comprehensive Transportation Plan

### Projects with Identified Funding Sources

- US 101 widening

### Unconstrained CTP Projects

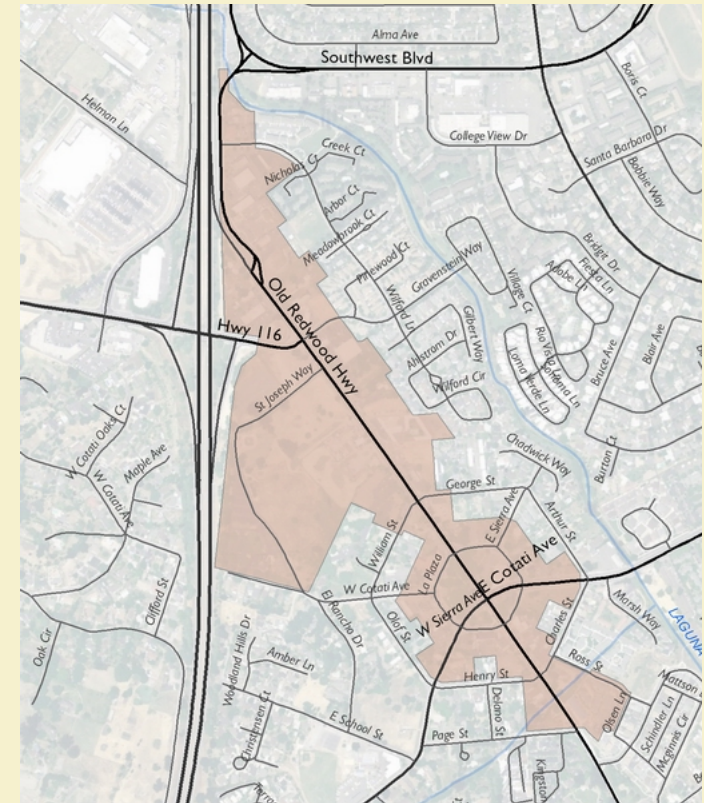
- Railroad Avenue widening and interchange
- East Cotati Avenue arterial management
- West Sierra Avenue bike lanes
- Old Redwood Highway rehabilitation
- Sonoma County Transit 30-minute headways

# Circulation in Cotati



## Downtown Specific Plan

- Emphasis on form to enhance “sense of place”
- Pedestrian and bicycle improvements
- Establish street grid on northern gateway
- Intersection improvements
- 25 mph design speed
- Reunification of La Plaza Park

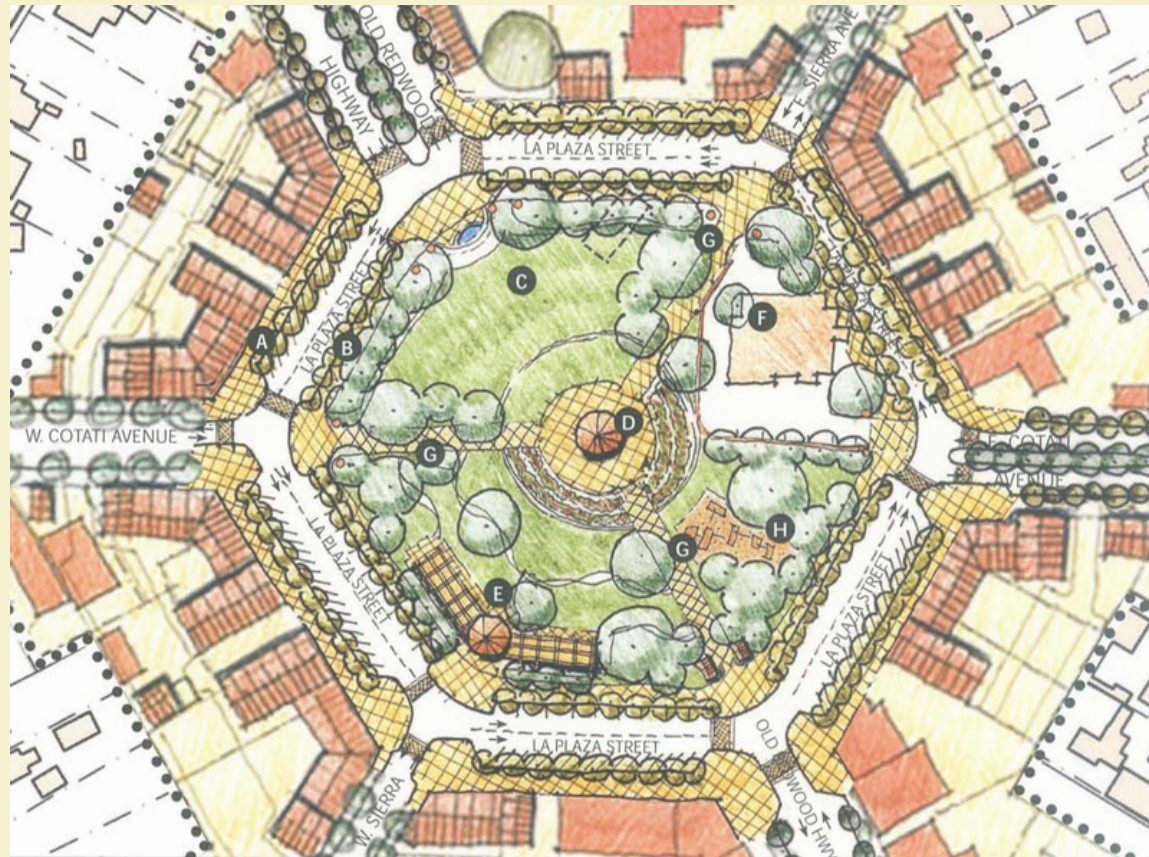




# Circulation in Cotati



## Downtown Specific Plan



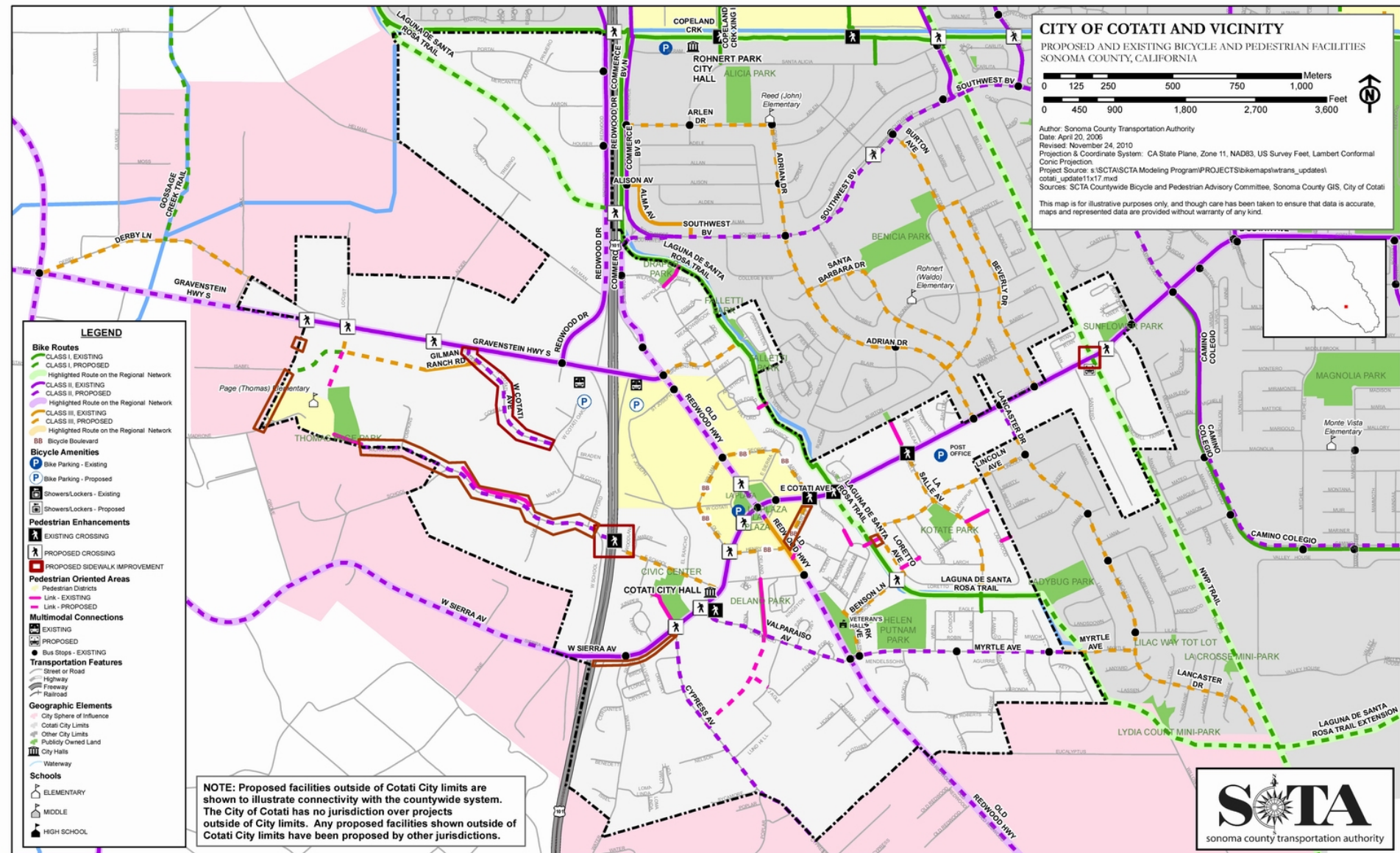


# Circulation in Cotati

## Bicycle and Pedestrian Master Plan



# Circulation in Cotati





# Circulation in Cotati

## CITY OF COTATI AND VICINITY

PROPOSED AND EXISTING BICYCLE AND PEDESTRIAN FACILITIES  
SONOMA COUNTY, CALIFORNIA



Author: Sonoma County Transportation Authority  
Date: April 20, 2006  
Revised: November 24, 2010  
Projection & Coordinate System: CA State Plane, Zone 11, NAD83, US Survey Feet, Lambert Conformal Conic Projection  
Project Source: s:\SCTA\SCTA Modeling Program\PROJECTS\Bikemap\swtrans\_updates\cotati\_update11x17.mxd  
Sources: SCTA Countywide Bicycle and Pedestrian Advisory Committee, Sonoma County GIS, City of Cotati  
This map is for illustrative purposes only, and though care has been taken to ensure that data is accurate, maps and represented data are provided without warranty of any kind.



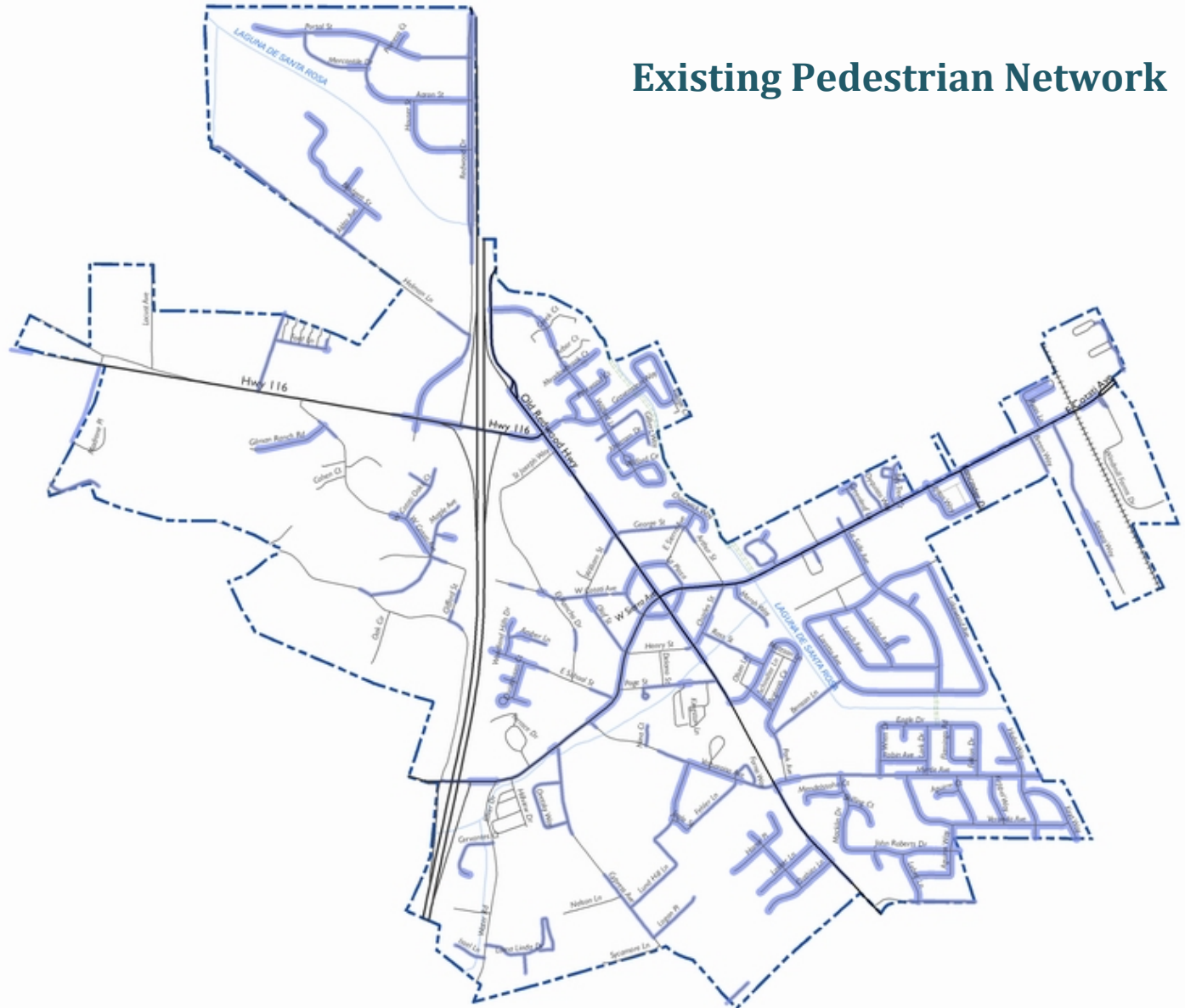
- LEGEND**
- Bike Routes**
- CLASS I, EXISTING
  - CLASS I, PROPOSED
  - CLASS II, EXISTING
  - CLASS II, PROPOSED
  - CLASS III, EXISTING
  - CLASS III, PROPOSED
  - CLASS IV, EXISTING
  - CLASS IV, PROPOSED
  - CLASS V, EXISTING
  - CLASS V, PROPOSED
  - CLASS VI, EXISTING
  - CLASS VI, PROPOSED
  - CLASS VII, EXISTING
  - CLASS VII, PROPOSED
  - CLASS VIII, EXISTING
  - CLASS VIII, PROPOSED
  - CLASS IX, EXISTING
  - CLASS IX, PROPOSED
  - CLASS X, EXISTING
  - CLASS X, PROPOSED
  - CLASS XI, EXISTING
  - CLASS XI, PROPOSED
  - CLASS XII, EXISTING
  - CLASS XII, PROPOSED
  - CLASS XIII, EXISTING
  - CLASS XIII, PROPOSED
  - CLASS XIV, EXISTING
  - CLASS XIV, PROPOSED
  - CLASS XV, EXISTING
  - CLASS XV, PROPOSED
  - CLASS XVI, EXISTING
  - CLASS XVI, PROPOSED
  - CLASS XVII, EXISTING
  - CLASS XVII, PROPOSED
  - CLASS XVIII, EXISTING
  - CLASS XVIII, PROPOSED
  - CLASS XIX, EXISTING
  - CLASS XIX, PROPOSED
  - CLASS XX, EXISTING
  - CLASS XX, PROPOSED
  - CLASS XXI, EXISTING
  - CLASS XXI, PROPOSED
  - CLASS XXII, EXISTING
  - CLASS XXII, PROPOSED
  - CLASS XXIII, EXISTING
  - CLASS XXIII, PROPOSED
  - CLASS XXIV, EXISTING
  - CLASS XXIV, PROPOSED
  - CLASS XXV, EXISTING
  - CLASS XXV, PROPOSED
  - CLASS XXVI, EXISTING
  - CLASS XXVI, PROPOSED
  - CLASS XXVII, EXISTING
  - CLASS XXVII, PROPOSED
  - CLASS XXVIII, EXISTING
  - CLASS XXVIII, PROPOSED
  - CLASS XXIX, EXISTING
  - CLASS XXIX, PROPOSED
  - CLASS XXX, EXISTING
  - CLASS XXX, PROPOSED
- Bicycle Amenities**
- Bike Parking - Existing
  - Bike Parking - Proposed
  - Showers/Lockers - Existing
  - Showers/Lockers - Proposed
- Pedestrian Enhancements**
- EXISTING CROSSING
  - PROPOSED CROSSING
  - PROPOSED SIDEWALK IMPROVEMENT
- Pedestrian Oriented Areas**
- Link - EXISTING
  - Link - PROPOSED
- Multimodal Connections**
- EXISTING
  - PROPOSED
- Transportation Features**
- Bus Stops - EXISTING
  - Street or Road
  - Highway
  - Freeway
  - Railroad
- Geographic Elements**
- City Sphere of Influence
  - Cotati City Limits
  - Other City Limits
  - Publicly Owned Land
  - City Halls
  - Waterways
- Schools**
- ELEMENTARY
  - MIDDLE
  - HIGH SCHOOL

NOTE: Proposed facilities outside of Cotati City limits are shown to illustrate connectivity with the countywide system. The City of Cotati has no jurisdiction over projects outside of City limits. Any proposed facilities shown outside of Cotati City limits have been proposed by other jurisdictions.

# Circulation in Cotati



## Existing Pedestrian Network





# TRANSPORTATION IN COTATI

## EXISTING CONDITIONS



# Circulation in Cotati

## Circulation Data



- Traffic devices and signal timing
- Street cross-sections (widths of lanes, bike facilities, sidewalks, buffers)
- Parking activity and driveways
- Streetscape amenities (bus shelters, street trees, landscaped buffers)
- Transit operations
- Collision history



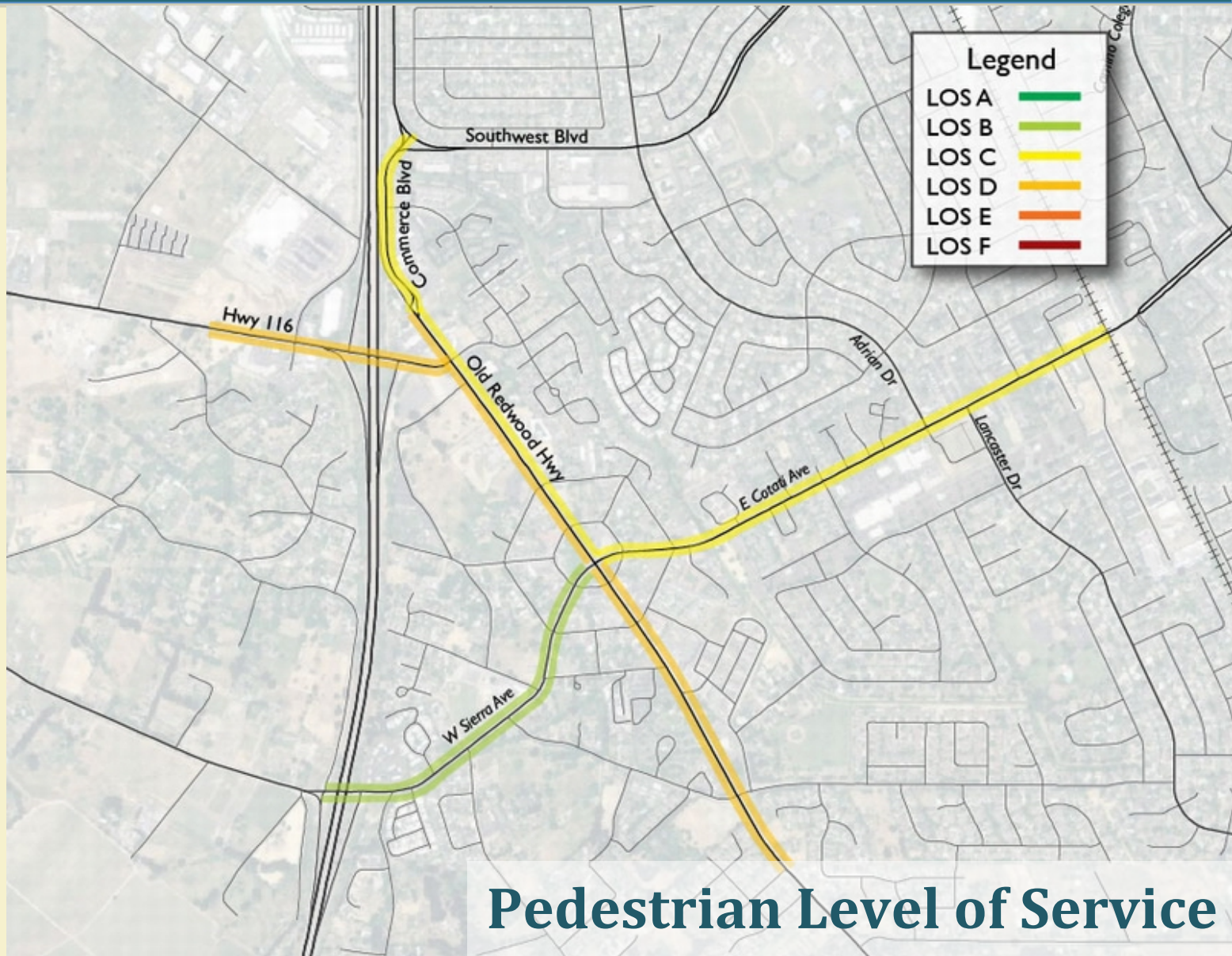
# Circulation in Cotati



## Multimodal Level of Service (MMLoS)

- New nationwide methodology
- Quantifies performance by user group
  - Auto, Transit, Bicycle, and Pedestrian
- Use of letter “grades”
  - A through F (including E)
  - Measure ease of mobility
  - LOS “A” not necessarily the best for autos
- Methodology is not perfect

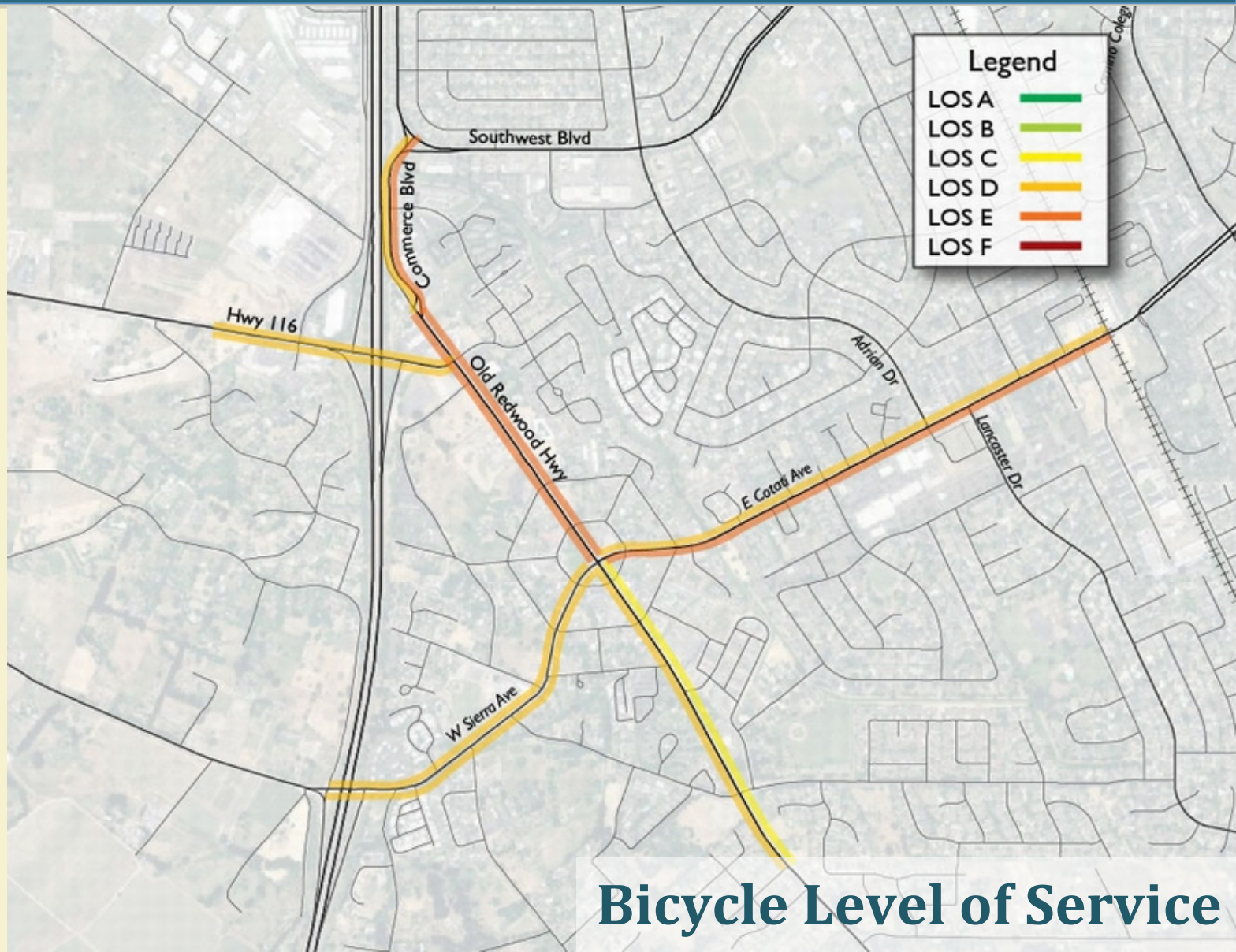
# Circulation in Cotati



**Pedestrian Level of Service**



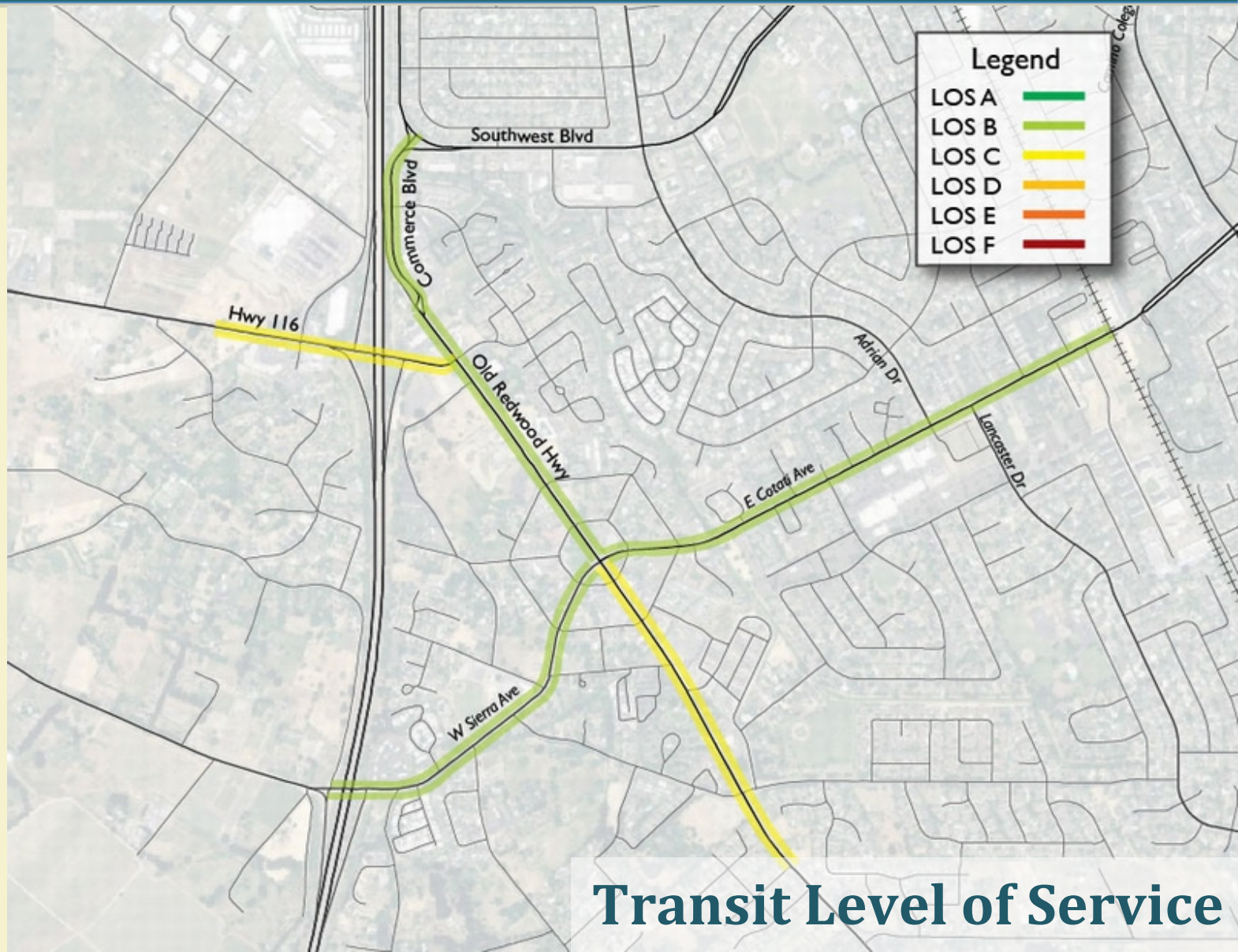
# Circulation in Cotati



**Bicycle Level of Service**



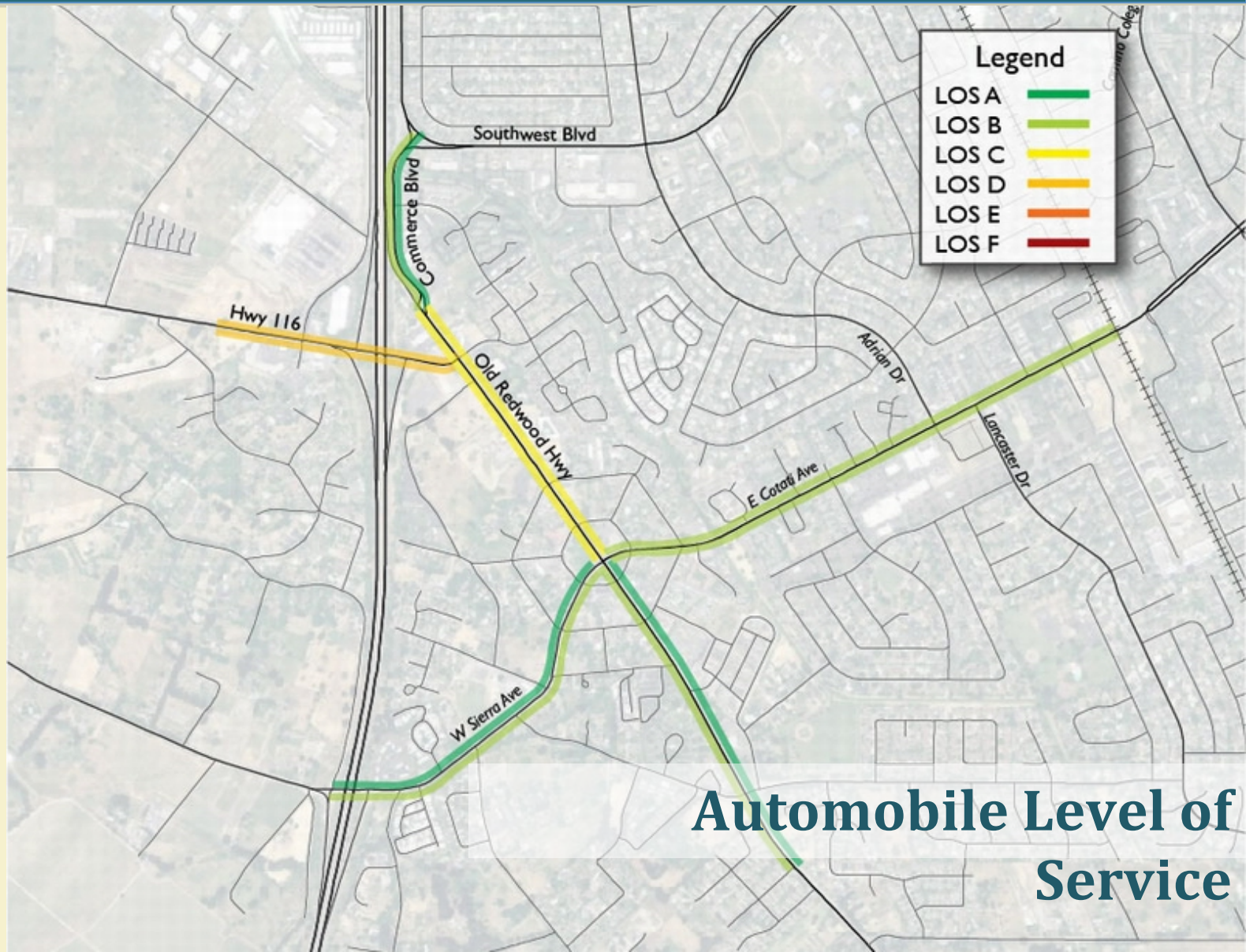
# Circulation in Cotati



**Transit Level of Service**



# Circulation in Cotati





# ACTIVITY # 1

## POST-IT EXERCISE



# Post-It Notes Exercise



## TOP PRIORITIES – 2 Post-It Notes

- What two transportation issues (e.g., extending bicycle lanes, improving sidewalks, decreasing vehicle congestion, providing ADA improvements, decreasing vehicle speeds, additional transit service, etc.) do you think should be the top priorities for the General Plan Update?

## CIRCULATION PROBLEMS – 2 Post-It Notes

- Identify the two locations (street corridors, intersections, etc.) that you think have the most critical circulation problems in Cotati.



# ACTIVITY #2

## CIRCULATION MAPPING EXERCISE

# Mapping Exercise



Using the colored markers, please identify the following transportation and circulation needs on the map:

- **Green** – Sidewalks and paths
- **Blue** – Bike lanes
- **Orange** – Transit
- **Red** – Road improvements to accommodate vehicles
- **Black** – Other improvements and Notes



# SUMMARY: WHAT WE HAVE HEARD